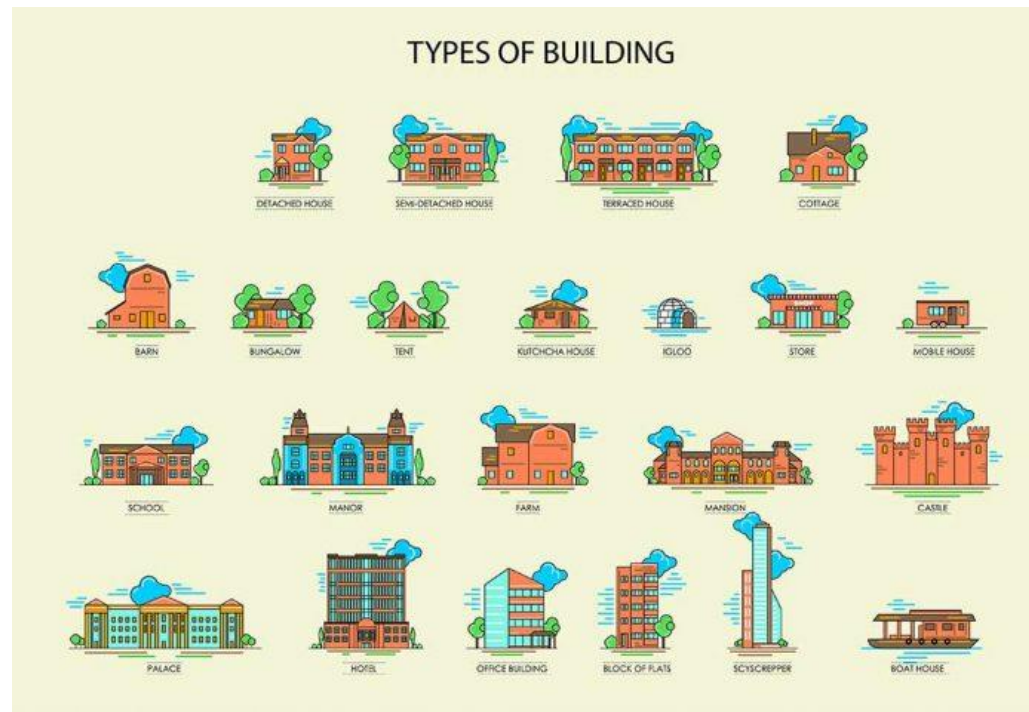


**«Типы домов в Великобритании»
презентация для 9 класса
Автор: Ермолова И.В., учитель
английского языка ГАО СО «Гимназия №1»**

РЕКОМЕНДОВАНО
школьным методическим объединением
учителей английского языка
ГАОУ СО «Гимназия № 1»
протокол № 4 от «28» марта 2025 г.
Руководитель МО
Мамбур Мамбула И.Т.



English architecture is very unique and has been preserved with care over the years. When it comes to types of houses in the UK or in general English architectural style, we should mention there are many! Throughout centuries the terms and namings of house styles and houses have changed a lot. Let's try to go back to British architecture and find out more about it.



Here are some of the main factors you need to know about British houses:

Housing Types: Some common types include **terraced** houses, **semi-detached** houses, **detached** houses, **bungalows**, and **flats (apartments)**.

The most common type of British house is the **terraced house**, which is typically found in urban areas. Terraced houses are attached to each other, while **semi-detached** houses are attached to another house on one side. They often have a small front garden and a larger back garden.



Detached houses are common, particularly in suburban and rural areas. These houses are not attached to any other properties and often have a larger plot of land, including a front garden and a back garden.



A bungalow is a house that usually has only one storey (= level), sometimes with a smaller upper storey set in the roof and windows that come out from the roof.



A cottage is a small house, away from the city or town, usually in the countryside.



A chalet is small wooden house found in mountain areas, especially one used by people on holiday.



A flat /an apartment is a set of rooms for living in that are part of a larger building and are usually all on one floor.



Architectural Styles: There are many different architectural styles of houses in the UK, including **Georgian, Victorian, Edwardian, Arts and Crafts, Art Deco**, and more. Each style has its own unique features and characteristics.

Many British-style houses can uniquely be separated from any other style. Let's discuss the English architecture style separately.

Tudor House Styles (1485 - 1603)

Tudor-style houses are traditional English homes that were popular during the Tudor period (1485-1603). Some common features of Tudor-style houses include

- Timber framing (деревянный каркас) with white stucco (штукатурка) or brick infill (заполнение)
- Steeply (крутые) pitched (скатные) roofs with prominent (выступающий) chimneys
- Tall, narrow windows with diamond-shaped panes (ромбовидные стекла)
- Decorative half-timbering (фахверковая опалубка) on the upper stories
- Arched doorways (арочные дверные проемы)and ornate carvings (богато украшенная резьба)



Tudor House Styles (1485 - 1603)

Tudor-style houses can vary in size and shape, but they are typically asymmetrical and have a cozy, cottage-like feel. They are often associated with a romanticized vision of medieval England and are still popular in England and other countries today. Even now when you travel to suburban areas of England you can find very typical English houses that are mostly Tudor style homes with typical British house interiors.



Georgian House Style (1714 - 1830)

Georgian-style houses are traditional English homes that were popular during the reigns of the British monarchs George I, George II, and George III (1714-1820). Some common features of Georgian-style houses include

- Symmetrical façades with evenly spaced (равномерно расположенными) windows and a central doorway;
- Brick or stone construction is often painted white or a light colour;
- Flat or low-pitched (низкоскатные) roofs with a decorative cornice (карниз);
- Classical details, such as columns, pediments, and moldings (фронтоны и лепнина);
- Multi-pane sash (створчатые) windows, often with shutters (ставни).

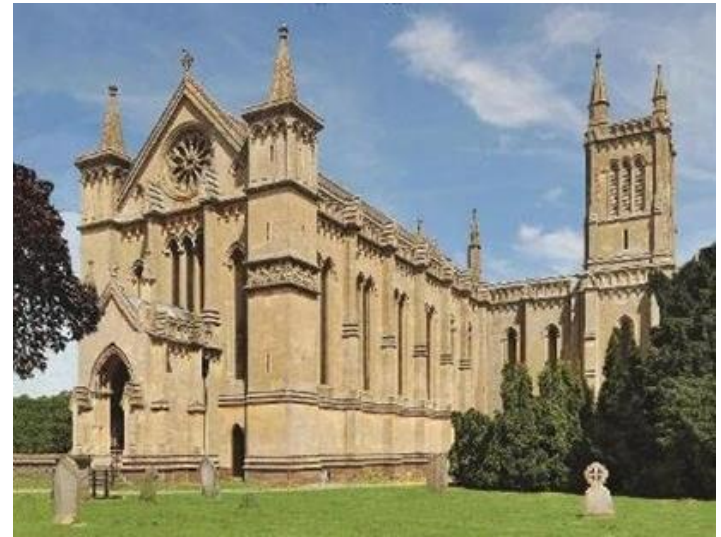
It can include additional stories and 1/2 stories, with the top floors featuring smaller and dormer (мансардные) windows and lower ceilings in spaces (помещения) that were originally reserved for staff.



Georgian-Style Houses

Georgian-style houses can vary in size and shape, but they are typically grand and elegant, reflecting the wealth and status of the people who lived in them. They were often built for the wealthy and aristocratic classes, and many examples can still be seen in cities and towns across England today. The Georgian style is perhaps one of the most beautiful English home architectural styles that can be taken as a splendid example for construction if you like the feel of it.

In addition to being used in a variety of housing types, Georgian architecture was a popular style for churches and public buildings. The decorative arts and interior design also flourished during the Georgian period.



Victorian-Style Houses (between 1860 and 1900)

The houses usually have two to three stories with steep, gabled (крутые, остроконечные) roofs and round towers. On the exterior (снаружи), there are towers, turrets (турели – маленькие башенки), and dormers (мансардные окна), forming complex roof lines as architects sought to create designs that would pull the eye to the top of the house.



Gothic Revival House Styles (the late 1700s - 1860)

Gothic Revival-style houses (дома в стиле неоготического возрождения) are traditional English homes that were popular in the 19th century and were inspired by the Gothic architecture of the Middle Ages.

Some common features of Gothic Revival-style houses include

- Pointed (стрельчатые) arches and vaulted (сводчатые) ceilings;
- Decorative tracery (узоры) on windows and doors;
- Ornate carvings and moldings (богато украшенная резьба и лепнина);
- Turrets (башенки) and towers with conical roofs;
- Steeply pitched roofs with cross gables and dormers (Крутоскатные крыши с поперечными фронтонами и мансардными окнами).



Gothic Revival House Styles (the late 1700s - 1860)

Gothic Revival-style houses can vary in size and shape, but they are typically grand and imposing (внушительные), reflecting the romanticism and fascination (очарование) with the past that characterized the Victorian era. They were often built for the wealthy and are still popular in England and other countries today, particularly as ornate (витиеватый) and luxurious private homes or as institutional buildings like schools or churches.



Arts and Crafts (декоративно-прикладной) House Style (the end of the 19th century)

The design and build of these homes is simple but sturdy (крепкий) – using traditional building methods and natural materials. They aim to reflect their locality (местонахождение) through the use of locally-sourced materials and regional craftsman. This style has at its heart five main principles: clarity (четкость) of form or structure, variety of materials, asymmetry, traditional construction and craftsmanship (мастерство).



Art Deco House Style (Дома в стиле ар-деко) (1920 - 1940)

Art Deco is a style that emerged in the 1920s and 1930s and is characterized by its bold (смелые), geometric shapes, streamlined (обтекаемые) forms, and use of modern materials like glass and steel. Art Deco houses are typically two-story structures with a flat roof and feature elements like decorative stucco (лепнина) or stone curved (изогнутые) forms, and zigzag or geometric motifs. Large windows are often a hallmark (отличительная черта) of Art Deco houses, as are asymmetrical façades and vertical elements like towers or spires (шпили). The style is also known for its use of materials like chrome, glass, and polished stone, which lend (придают) a modern, industrial feel.



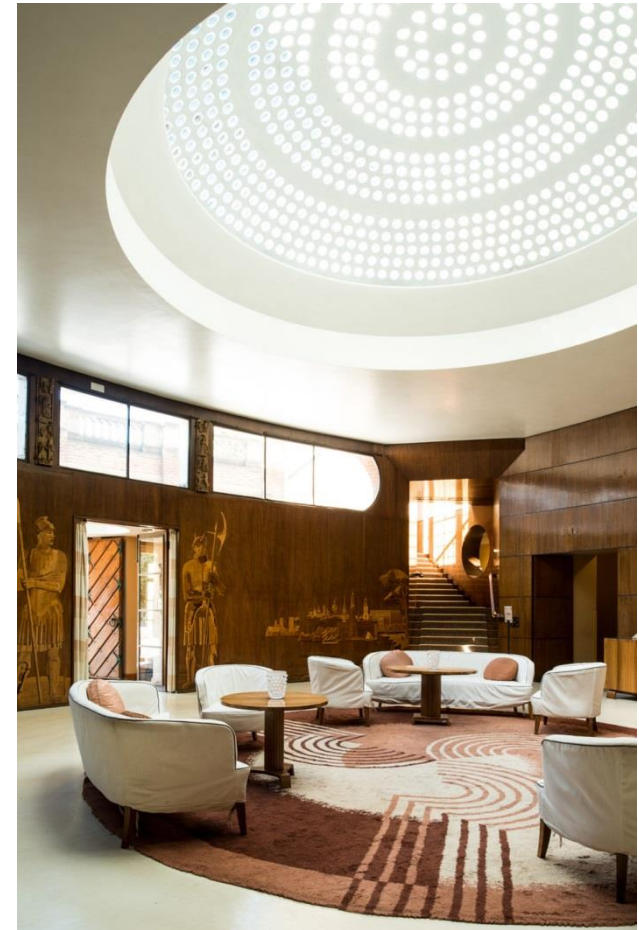
Art Deco House Style (1920 - 1940)

Some common features of Art Deco houses include

- Decorative tracery on windows and doors
- Clean lines and geometric forms
- Bright colours
- Use of contemporary industrial materials like steel and concrete
- Exotic influences, including touches of Moorish, Mayan, and Egyptian design.

Inside, Art Deco houses often feature curved walls, recessed lighting, and built-in furniture. The style also incorporates geometric patterns and bold colours.

Art Deco remains a popular architectural style today, and many Art Deco houses have been preserved or restored. While the style is most commonly associated with the 1920s and 1930s, it continues to influence contemporary architecture and design. Many typical English homes are styled in Art Deco.



What type of house is this?



Cottage



Bungalow



Terraced houses

Which type of house is this?



Chalet



Flat House



Semi-Detached House

Which architectural style is this?



Arts and Crafts House Style



Gothic Revival



Art Deco House Style

Which architectural style is this?



Georgian House Style



Tudor House Style



Victorian House Style

Информационные ресурсы:

- <https://www.re-thinkingthefuture.com/designing-for-typologies/a3071-types-of-housing-typology-in-britain/>
- <https://housebuyers4u.co.uk/blog/7-key-types-of-houses-uk/>